



# ORIENTEERING WORLD CUP

FINAL ROUND 2018  
CZECH REPUBLIC

## ORIENTEERING WORLD CUP 2018 FINAL ROUND

04.10. – 07.10. 2018  
CZECH REPUBLIC



# Bulletin 1/2

## NOVEMBER 2017

*Dear orienteering friends,*

*These are the words of The Czech National Anthem:*

*Where is my home, where is my home?*

*Over leas are waters streaming,*

*On the hills blue forests dreaming,*

*Flowery worlds Spring's happy skies,*

*Like as earthly Paradise:*

*There's the land so full of beauty,*

*Czechia, my fatherland,*

*Czechia, my fatherland!*

*The anthem sings about beauty of Czech nature and paradise on earth.*

*"Paradise" is in the name of the beautiful natural area around cities of Jičín, Turnov and Mladá Boleslav, which is called – Český Ráj (Bohemian Paradise).*

*We would like to invite you to this region for World cup finals 2018.*

*Come enjoy our paradise.*



**Radan Kamenický**

Chairman of Czech Orienteering Federation

## Content

Welcome .....	4
Schedule .....	6
Event centre .....	6
Travel opportunities .....	7
Visas .....	7
Transportation .....	7
Terrain, climate, hazards .....	8
Locations and embargoed areas .....	8
Training possibilities .....	13
Entries .....	14
Accommodation .....	16
Contact .....	16
Organizers .....	17
Advisors & Controllers .....	17
Classes and participation restrictions .....	17
Events .....	18
Events for spectators .....	19





**ORIENTEERING  
WORLD CUP**  
FINAL ROUND 2018  
CZECH REPUBLIC

## WELCOME IN PRAGUE AND BOHEMIAN PARADISE!

Prague is the capital and largest city in the Czech Republic, the 14th largest city in the European Union and also the historical capital of Bohemia. Situated in the north-west of the country on the Vltava river, the city is home to about 1.4 million people.

Prague is home to a number of famous cultural attractions, many of which survived the violence and destruction of 20th-century Europe. Main attractions include the Prague Castle, the Charles Bridge, Old Town Square with the Prague astronomical clock, the Jewish Quarter, Petřín hill and Vyšehrad. Since 1992 the extensive historic centre of Prague has been included in the UNESCO list of World Heritage Sites.

The city has more than ten major museums, along with numerous theatres, galleries, cinemas and other historical exhibits. An extensive modern public transportation system connects the city. Also, it is home to a wide range of public and private schools, including Charles University in Prague, the oldest university in Central Europe.







There are not many places in Europe that offer as many natural attractions and beauties as Bohemian Paradise (Český ráj). At first glance, this hospitable landscape is scattered with dramatic rock formations, deep shady valleys, meandering rivers and quiet ponds surrounded by forests.

Bohemian Paradise is the oldest protected landscape area in the Czech Republic and in 2005 it became the core of a new UNESCO Geopark. Bohemian Paradise, this exceptionally colorful mosaic of landscape types, geological phenomena and biotopes, complemented by historic monuments and typical folk architecture, covers almost 1400 square kilometers and is situated between the towns of Mladá Boleslav, Jičín, Nová Paka and Semily.



## Schedule

<b>3rd October</b> Wednesday	arrival model sprint + technical model	Prague Prague
<b>4th October</b> Thursday	knockout sprint	Prague
<b>5th October</b> Friday	model middle distance sprint relay	Turnov Prague
<b>6th October</b> Saturday	middle distance banquet	Turnov Prague
<b>7th October</b> Sunday	sprint overall prize giving ceremony	Mladá Boleslav Mladá Boleslav

## Event centre

**Orea Hotel Pyramida**  
(GPS: 50.0858461N, 14.3802353E)

Bělohorská 125/24  
Praha - Břevnov  
169 00  
Czech Republic



## Travel opportunities

### To event centre:

by plane <b>Václav Havel Airport Prague (PRG)</b>	13 km	20 min by car 40 min by public transport
by train <b>Prague main station</b>	6 km	10 min by car 25 min by public transport

## Visas

According to the current regulations citizens of some countries must obtain a visa in order to enter Czech Republic. Please note that conditions of entry to Czech Republic can change and all World Cup participants are advised to keep up to date of the current situation.

Please visit <http://www.mzv.cz/jnp/en/index.html>

## Transportation

It is suggested that competitors and officials use their own cars. The organizer is not providing official transportation, but will support teams that rely on public transport in finding suitable ways to reach the training and event locations.

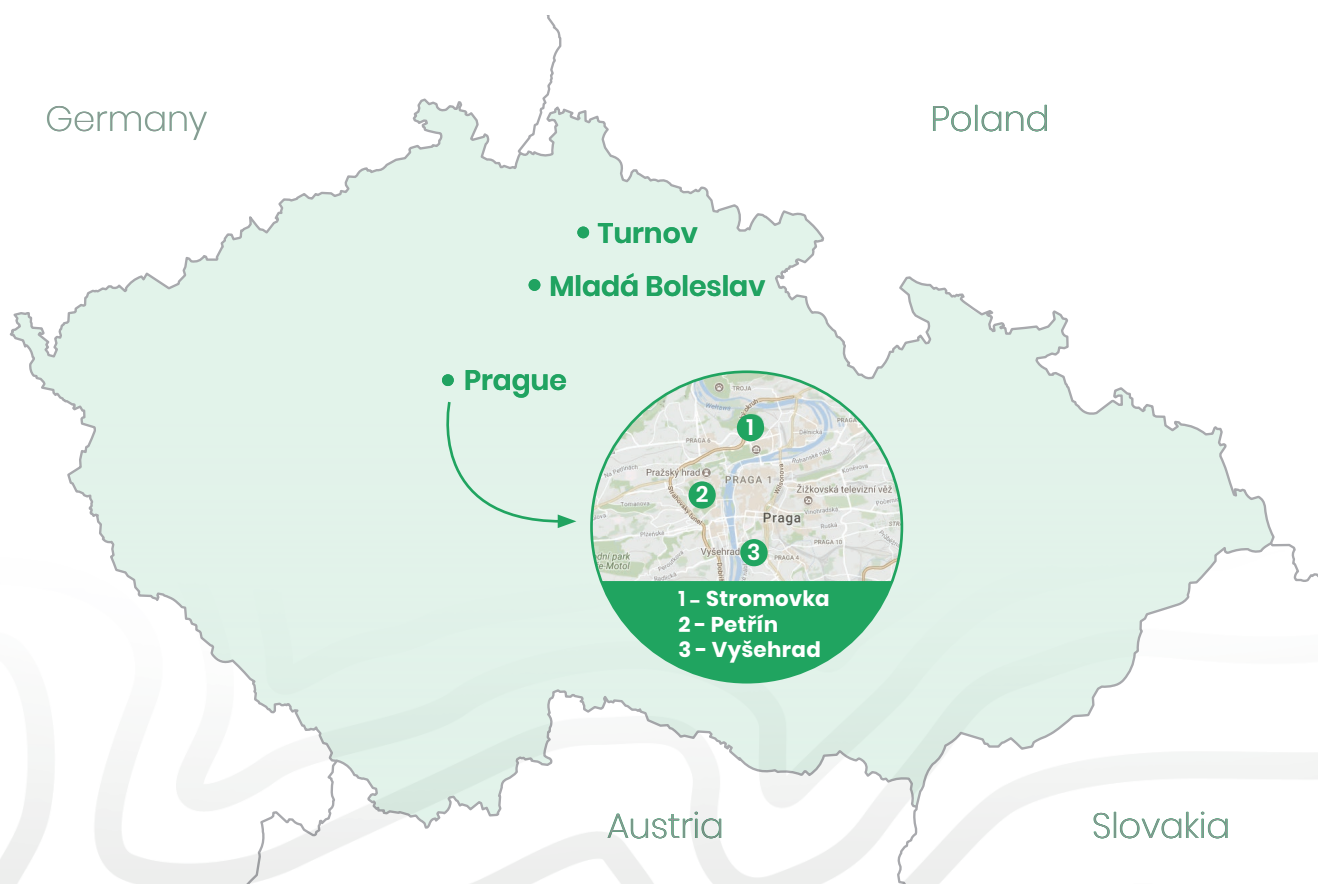
## Climate & hazards

Average temperature: 8 – 14 °C  
Probability of rain: moderate

There is no special clothing required. Shoes with metal dobs and spikes are not allowed in any race due to preservation of natural or cultural landscape. Using of such shoes is strictly forbidden and will be checked on the start. Runners with forbidden shoes will not be permitted to start.

No dangerous snakes, spiders or animals live in this region.  
Beware of ticks. It can transmit borreliosis and encephalitis. It is recommended to see a doctor after removing a tick.

## Locations and embargoed areas





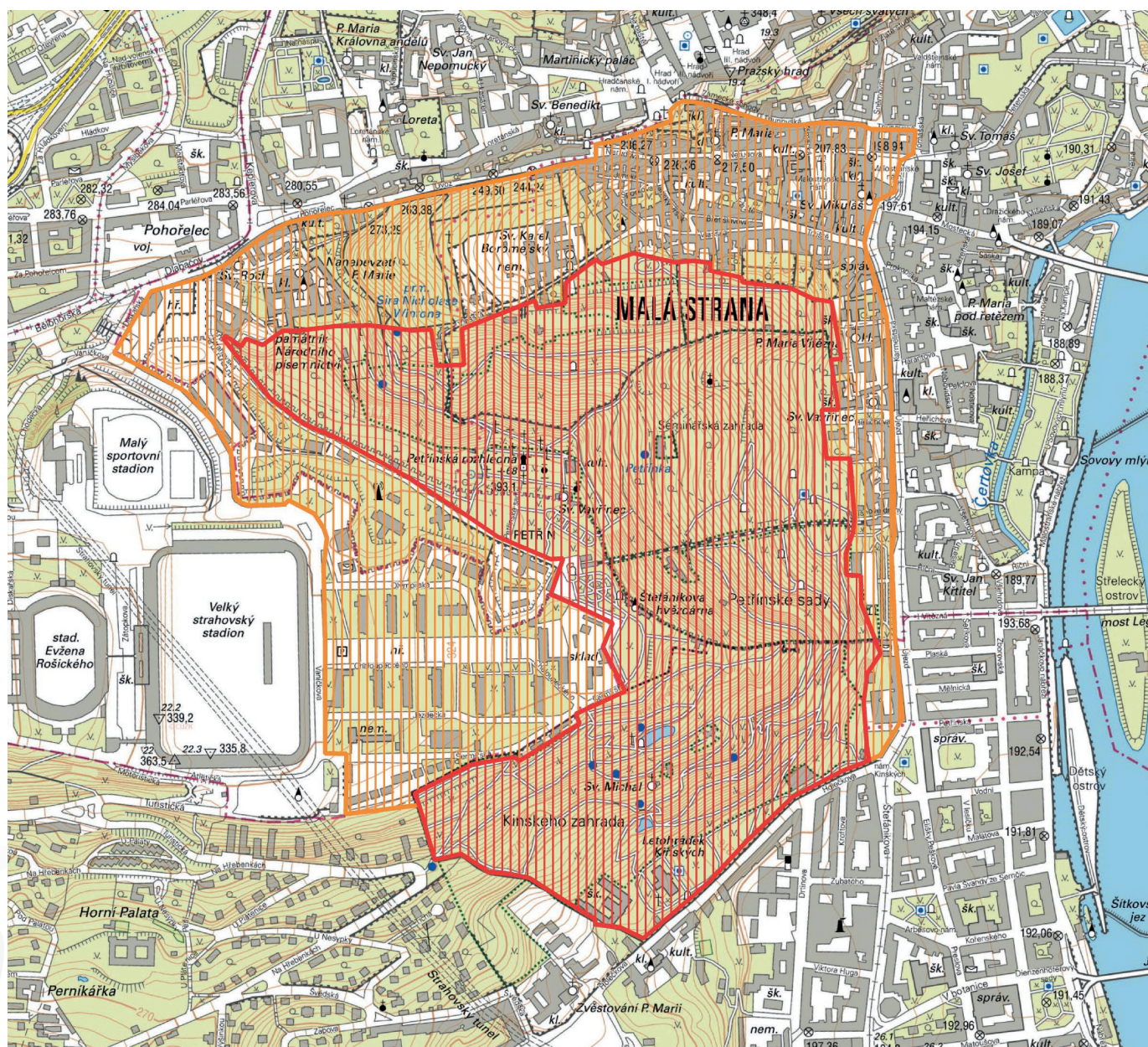
According to the IOF Competition Rules (rule 26.5), embargoed areas applies to all potential National Team members (runners, team leaders, coaches, doctors, physiotherapist, etc.) and all other who, through knowledge of the terrain, may influence the results of the competitions.

Embargoed areas have different level of strictness, from being open for visiting to fully embargoed.

On the embargoed area maps, orange indicates areas which are permitted for access for competitors, team officials and other persons but may not be used for orienteering and running trainings or route-choice testing.

Red indicates areas with strict embargo, meaning that competitors, team officials, and other persons, who, through knowledge of the terrain, may influence the results of the competitions, are not allowed to enter the area.

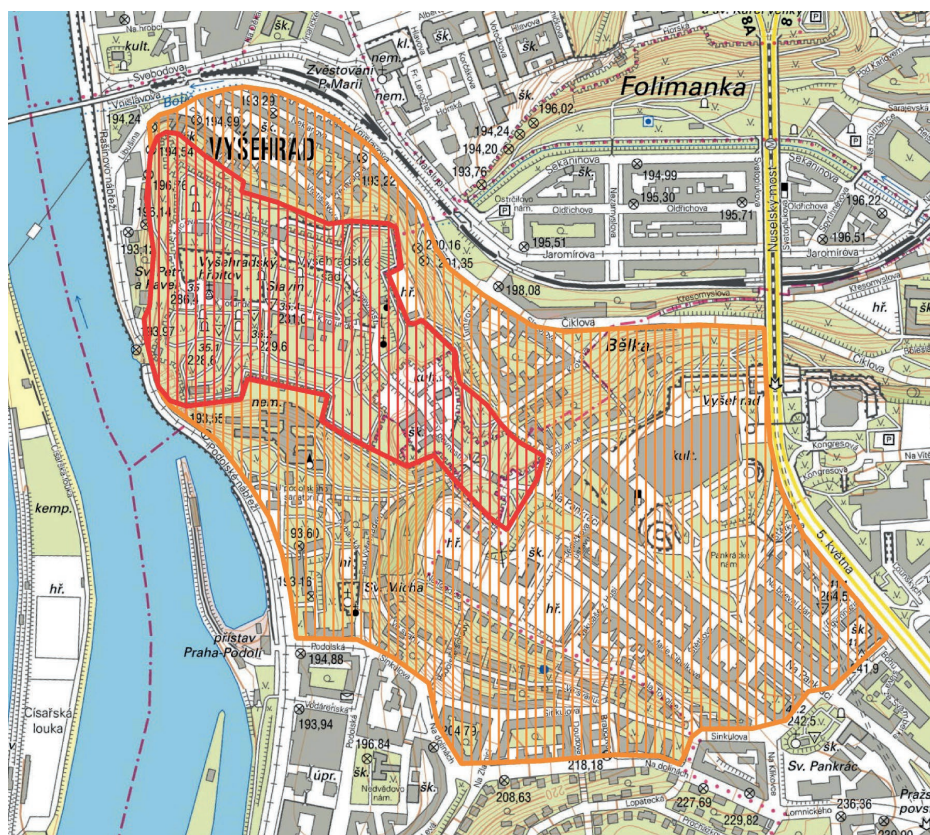
## Petřín (Prague)



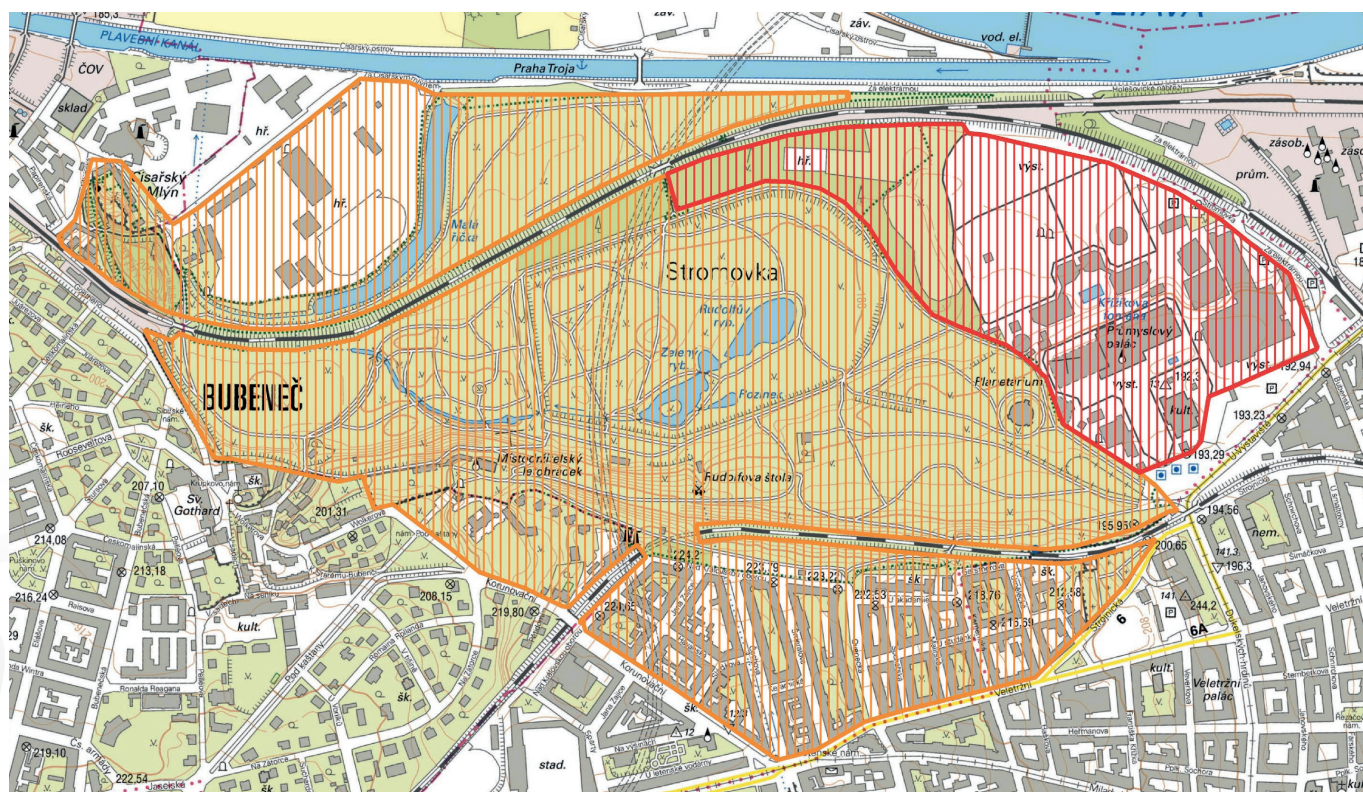




## Vyšehrad (Prague)



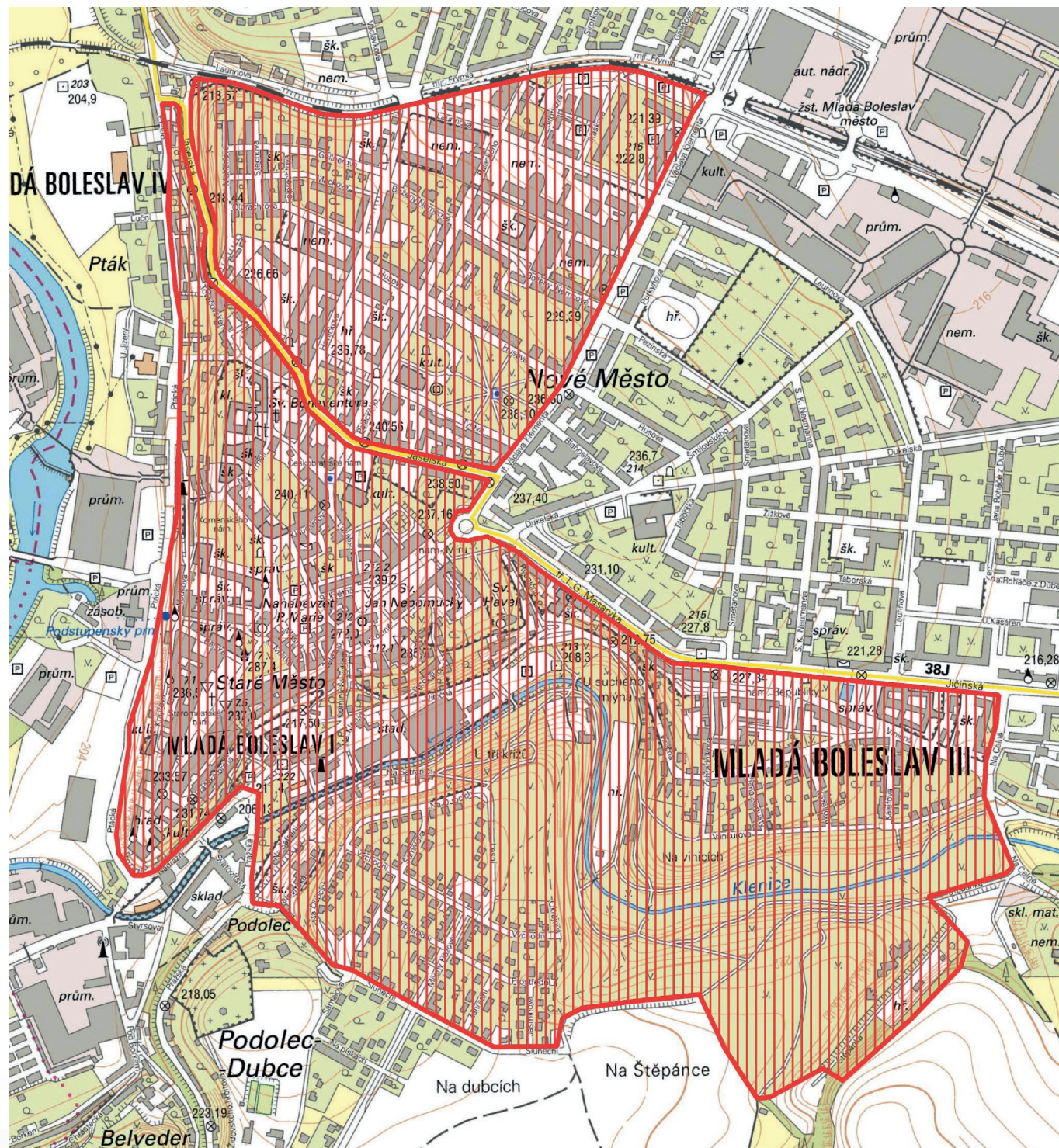
## Stromovka (Prague)





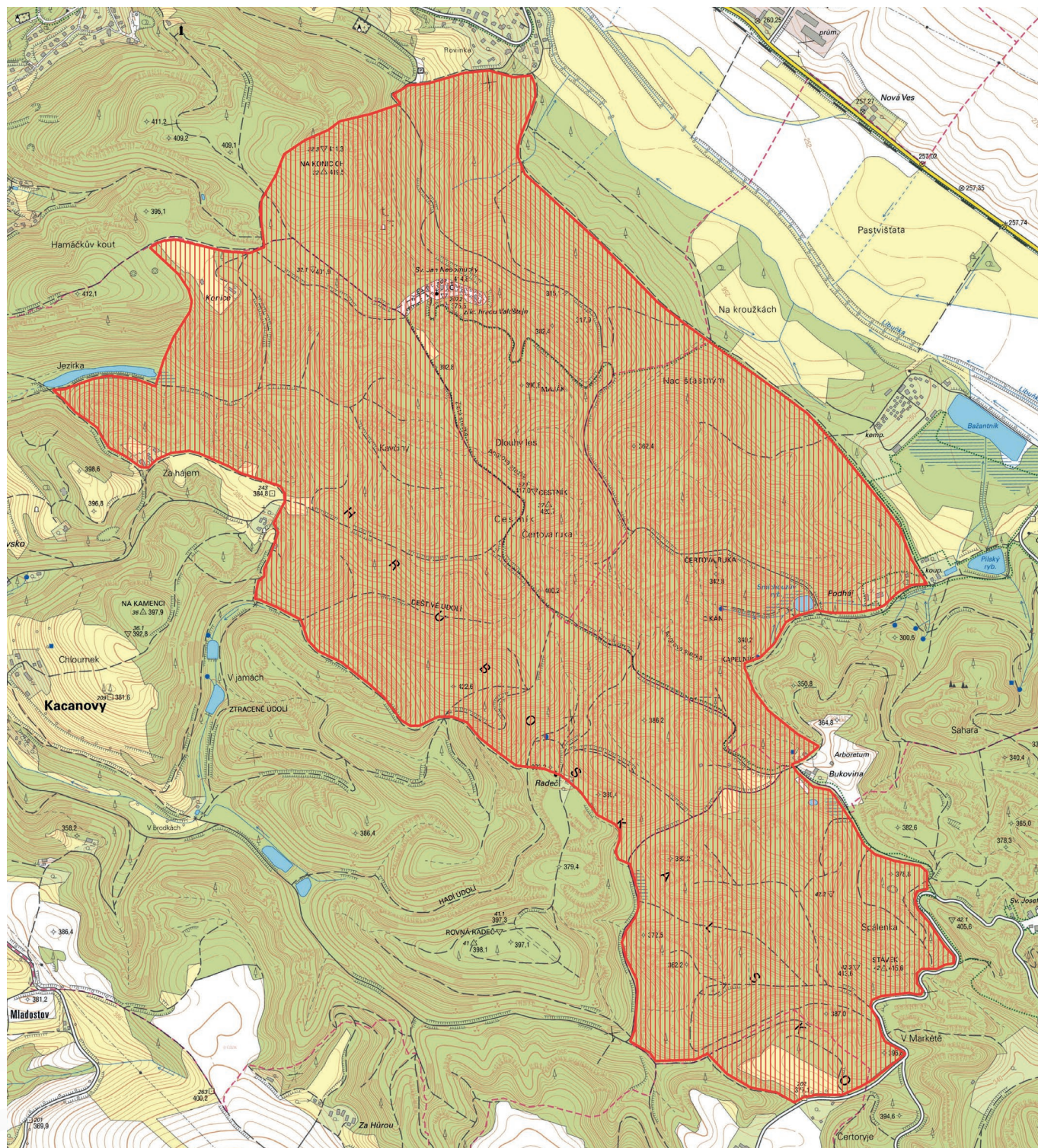


## Mladá Boleslav





## Turnov







Latest colour copies of maps of embargoed areas:

### **Petřín (Prague)**

**Petřín 4** 1:5 555 2010  
<http://mapy.orientacnisporty.cz/data/jpg/5712a.jpg>

**Praga Caput Regni MMXV** 1:5 000 2015  
<http://mapy.orientacnisporty.cz/data/jpg/8993X.jpg>

### **Vyšehrad (Prague)**

**Vyšehrad** 1:10 000 1999  
<http://mapy.orientacnisporty.cz/data/jpg/2859a.jpg>

### **Stromovka (Prague)**

**Večerník Praha** 1:5 000 2015  
<http://mapy.orientacnisporty.cz/data/jpg/8307X.jpg>

### **Mladá Boleslav**

**Štěpánka** 1:5 000 1998  
<http://mapy.orientacnisporty.cz/data/jpg/2841a.jpg>

### **Turnov**

**Svatá Anna** 1:10 000 2012  
<http://mapy.orientacnisporty.cz/data/jpg/6338a.jpg>

**Bukovec** 1:10 000 2015  
<http://mapy.orientacnisporty.cz/data/jpg/7982X.jpg>

## **Training possibilities**

### **Training possibilities in Prague:**

- <http://mapy.orientacnisporty.cz/mapa/karlin-vitkov-2015>
- <http://mapy.orientacnisporty.cz/mapa/invalidovna-copy-id-sprint-2015>
- <http://mapy.orientacnisporty.cz/mapa/parukarka-sprint-2017>

### **Training possibilities in Český ráj (Czech paradise) – near Turnov:**

- <http://mapy.orientacnisporty.cz/mapa/skalacek-2017>
- <http://mapy.orientacnisporty.cz/mapa/trosky-2017>
- <http://mapy.orientacnisporty.cz/mapa/bora-2017>

Terrains are in protected landscape area Český ráj (Czech paradise), where are very strict conditions of organizing any sport event or training (even for small groups). It is forbidden organizing trainings in this area without agreement from organizers of World Cup or from orienteering club OOB TJ Turnov (<http://www.tur.cz/>). Shoes with metal doobs or spikes are forbidden.

Contact and more information for trainings: [trainings@wcup.cz](mailto:trainings@wcup.cz)

# Entries

## Entries for World Cup athletes and team officials

Entries via IOF Eventor.

The entry form will be available from 4 July 2018 on <https://eventor.orienteering.org/Events/Show/5750>.

The Event start date is 3rd October 2018.

Entries are done by the National team manager.

## Team Size Entry

The following information shall be filled via IOF Eventor:

- Team manager (Chosen from list in IOF Eventor)
- Number of Team athletes (Men and Women)
- Number of Team Officials
- Number of Teams for the Relay(s)

The deadline for Team Size Entry is August 3, 2018 (– 2 months).

## Team Names Entry

The following information shall be filled via IOF Eventor:

- Name of each Team Athlete by selecting from federation members in IOF Eventor

The deadline for Team Names Entry is 23 September 2018 (– 10 days)

## Competition Entries

Names of the competitors and, if required, their starting group, shall be entered in IOF Eventor, before 12 noon on the day before an individual competition.

Names of the competitors and their running order shall be entered in IOF Eventor, before 12 noon on the day before a relay competition.

## Late Entries, Changes of Team Size or Team Names

Late Entries and changes will be accepted, if possible, up to Event start date, 3 October 2018. No late entries or changes will be accepted after that date. Late entries and changes will always have a defined extra cost (surcharge). Late entries and changes will always be treated equally and must be communicated directly to the organiser. The organiser makes the changes in IOF Eventor after deadlines.

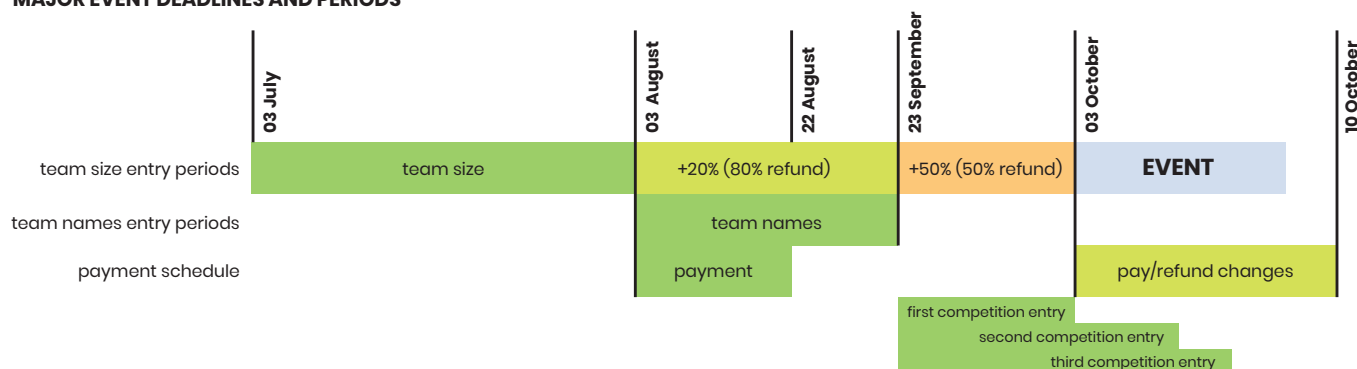
August 4 to September 23: surcharge 20% on new entries and withdrawals receive an 80% refund.

September 24 to October 3: surcharge of 50% on new entries, withdrawals receive a 50% refund. Name changes in this period cost 10 EURO.

## Payments

After the Team Size deadline (-2 months), the organiser will invoice the federation for entries and services. The invoices should be paid before 22 August 2018 (- 6 weeks). If the Federation have done changes after that date it will be paid/refunded on the event at the Event Office.

### MAJOR EVENT DEADLINES AND PERIODS



## Entry fee:

Knockout sprint (per competitor)	2 000 CZK
Sprint relay (per team)	4 800 CZK
Middle distance (per competitor)	1 300 CZK
Sprint (per competitor)	1 300 CZK
Accreditation for officials	1 000 CZK
Banquet	600 CZK

**Accreditation for athletes is included in entry fees. There is no limit for maximum officials per team.**

**Bank:** Fio banka, a.s., V Celnici 1028/10, 117 21 Praha 1, Česká republika

**Account number:** 706189423 / 2010

**IBAN:** CZ84201000000000706189423

**BIC:** FIOBCZPPXXX

**Account owner:** Český orientační spolek z.s.

**Detail of payment:** number of invoice

(there will be created separate invoice for every payment and it will be sent on email)

**Notice: Bank charges will be fully paid by payment sender!**

**Important: The entry submission is confirmed after the payment is received. Unless entry fee is paid, the entry is not valid. The payment for entries shall reach the organizers bank account no later than deadline for the team size entries (4th August 2018).**

There are no regulations for registration media representatives and extra representatives of the Federations.



## Accommodation

### Price covers accommodation / 1 person / 1 night

A – single room (incl. breakfast)	2750 CZK	(+500 CZK dinner)
A – double room (incl. breakfast)	1450 CZK	(+500 CZK dinner)
C – single room	500 CZK	(+ 300 CZK half board)
C – double room	450 CZK	(+ 300 CZK half board)

Accommodation guaranteed if booked until 1st March 2018 by e-mail [accommodation@wcup.cz](mailto:accommodation@wcup.cz)  
Later booking via organiser is limited, contact e-mail [accommodation@wcup.cz](mailto:accommodation@wcup.cz).

## Contact

**www:** <http://wcup.cz/>

### Address:

Český orientační spolek z.s.  
Chudenická 1059/30  
Praha 10 – Hostivař  
102 00  
Czech Republic

### Phone:

+420 725 850 045  
(e-mail preferred)

### Email:

[info@wcup.cz](mailto:info@wcup.cz)

## Organizers

### Český svaz orientačních sportů Český orientační spolek

#### Organizing committee:

event director  
technical director  
sport director  
organization director  
secretary, chief cartographer  
accommodation

David Aleš  
Jan Pícek  
Daniel Wolf  
Matěj Suchý  
Jan Fátor  
Jarmila Němečková

david.ales@wcup.cz  
jan.picek@wcup.cz  
daniel.wolf@wcup.cz  
matej.suchy@wcup.cz  
info@wcup.cz  
jarmila.nemeckova@wcup.cz

*Our team is looking forward to you!*

## Advisers & Controllers

IOF Senior Event Adviser  
National controller

Péter Molnár (HUN)  
Adam Chromý

peter@veszcart.hu  
chra@adamna.net

## Classes and participation restrictions for World Cup 2018 Final Round

Classes in all races are Men and Women. There are no age restrictions.

Each participating Federation shall appoint a team manager to act as a contact person between the team and the organizer. It is the team manager's duty to see that the team receives all necessary information. Competitors participate at their own risk. Insurance against accidents shall be the responsibility of their Federation or themselves, according to national regulations. There are no other peculiarities of the event.

SI Air+ punching will be used during all competitions. SI cards will be provided by organizers.

## Events

### Knockout sprint

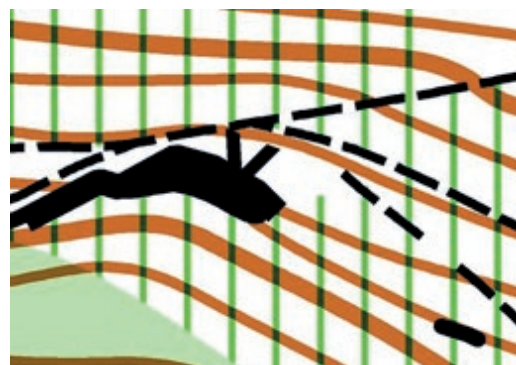
**Date:** Thursday, 4th October  
**Location:** Prague  
**Terrain:** city and park, very good runnability and visibility, altitude 200 – 300 m  
**Map:** scale 1 : 4 000, contour interval 2 m, ISSOM 2007, mapped by Jan Fátor  
**Course planner:** Jan Flašar



**Number of rounds:** 4 (Qualification race, Quarterfinal – 6 heats, 36 competitors, Semifinal – 3 heats, 18 competitors, Final – 1 heat, 6 competitors)  
 Max. number of competitors from each federation according to the World cup 2018 Special Rules  
**Approx. course length for women:** 2 km/each round  
**Winning time for women:** 6–8 min/each round  
**Approx. course length for men:** 2.2 km/each round  
**Winning time for men:** 6–8 min/each round

### Sprint relay

**Date:** Friday, 5th October  
**Location:** Prague  
**Terrain:** city and park, very good runnability and visibility, altitude 200 – 330 m  
**Map:** scale 1 : 4 000, contour interval 2 m, ISSOM 2007, mapped by Jan Fátor  
**Course planner:** Jan Mrázek



**Number of legs:** 4  
 Max. number of teams from each federation according to the World cup 2018 Sprint Relay Special Rules  
**Approx. course length for women:** 3.5 km  
**Approx. course length for men:** 3.9 km  
**Winning time:** 60 min



## Middle distance

**Date:** Saturday, 6th October  
**Location:** Turnov (95 – 100 km from event centre)  
**Terrain:** sandstone rocks, moderate density of paths, deep and steep valleys, mostly good runnability and visibility, altitude 300 – 400 m  
**Map:** scale 1 : 10 000, contour interval 5 m, ISOM 2017, mapped by Zdeněk Sokolář  
**Course planner:** Jindřich Kořínek



Max. number of competitors from each federation according to the World cup 2018 Special Rules

**Approx. course length for women:** 4.0 km

**Winning time for women:** 35 min

**Approx. course length for men:** 5.0 km

**Winning time for men:** 35 min

## Sprint

**Date:** Sunday, 7th October  
**Location:** Mladá Boleslav (65 – 70 km from event centre)  
**Terrain:** city and park, very good runnability and visibility, altitude 200 – 230 m  
**Map:** scale 1 : 4 000, contour interval 2 m, ISSOM 2007, mapped by Jan Fátor  
**Course planner:** Daniel Wolf



Max. number of competitors from each federation according to the World cup 2018 Special Rules

**Approx. course length for women:** 3.5 km

**Winning time for women:** 14:50 min

**Approx. course length for men:** 4.2 km

**Winning time for men:** 14:50 min

## Events for spectators

**Saturday** 6th October  
**Sunday** 7th October

middle distance, regional event  
sprint, regional event

Turnov  
Mladá Boleslav

More detailed information will be published during spring 2018.