



ORIENTEERING WORLD CUP

FINAL ROUND 2018
CZECH REPUBLIC



ORIENTEERING WORLD CUP 2018 FINAL ROUND

4. 10. – 7. 10. 2018
CZECH REPUBLIC



Bulletin 3

AUGUST 2018



Dear Sports Friends,

I am glad that we can welcome again the best orienteers from all over the world in the Czech Republic in the Final round of orienteering World Cup.

In 2018, the Czech Republic celebrates its important anniversary – 100 years of its autonomous existence, as in October 1918, after the end of the WWI, the Czech and Slovak people freed themselves from the Austro-Hungarian Empire and Czechoslovakia, later the Czech Republic was established.

It is a bit symbolic that the final round of World Cup and IOF Congress are being held exactly during the celebration of this anniversary in the capital of the Czech Republic, Prague. It is also a bit symbolic that the organizers chose two park terrains – Petřín and Stromovka, between which, just in the middle, is situated the Prague Castle – a symbol of Czech statehood. I recommend to all participants to consider it's visit in their spare time, it is just a stone's throw away from the event center and official accommodation.

I want to tell you one more thing. 10 years have passed since the Czech Republic organized World orienteering championship in Olomouc and began with the support of IOF with the realization of TV project, i.e. to get more orienteering in better quality on the screens. In these 10 years, we have taken quite significant steps forward in this project. The Czech footprint was to be seen for example in securing streamings from WOC in Italy, Scotland, Estonia, Latvia, range of World Cups and from a wide range of domestic broadcasts, reports and documents. As this is my domain in our federation, I want to assure You that we are preparing high level broadcasts also from these World Cup races, all under the direction of renowned sports director Karel Jonák and his team.

I wish all the participants of the World Cup's final round and IOF Congress a lot of success, sporting experiences and fruitful negotiations in the IOF Congress.

Ivan Matějů

Vice-chairman of Czech Orienteering Federation

Content

4	Venue
7	Schedule
8	Event centre
8	Event office
9	Travel distances
9	Visas
10	Transportation
11	Climate & risks
11	Model event
12	Embargoed areas
17	Training possibilities
18	Entries
20	Accommodation
20	Media
20	GPS
20	Anti-doping Code
21	VIP / Media race
21	Adviser & Controller
21	Jury
21	Contact
22	Organizers
22	Classes and participation restrictions
22	National quotas for competitions
23	Awards, Results, World Cup and World Ranking
24	Events
28	Events for spectators

Venue

Praha

Praha (Prague) is the capital and largest city of the Czech Republic, the 14th largest city in the European Union and the historical capital of Bohemia. Situated in the north-west of the country on the Vltava river, the city is home to about 1.3 million people, while its larger urban zone is estimated to have a population of 2.6 million. The city has a temperate climate, with warm summers and chilly winters. Founded during the Romanesque and flourishing by the Gothic, Renaissance and Baroque eras, Prague was the capital of the kingdom of Bohemia and the main residence of several Holy Roman Emperors, most notably of Charles IV. (r. 1346–1378). It was an important city to the Habsburg Monarchy and its Austro-Hungarian Empire. Prague is home to a number of famous cultural attractions, many of which survived the violence and destruction of Europe's 20th-century. Main attractions include the Prague Castle, the Charles Bridge, Old Town Square with the Prague astronomical clock, the Jewish Quarter, Petřín hill and Vyšehrad. Since 1992, the extensive historic centre of Prague has been included in the UNESCO list of World Heritage Sites. The city has more than ten major museums, along with numerous theatres, galleries, cinemas and other historical exhibits. An extensive modern public transportation system connects the city. Also, it is home to a wide range of public and private schools, including Charles University in Prague, the oldest university in Central Europe.





**ORIENTEERING
WORLD CUP**
FINAL ROUND 2018
CZECH REPUBLIC



Turnov

Turnov is a town on the Jizera river in northern Bohemia. It has about 14 500 inhabitants and lies in the southern part of Liberec Region. It is a traditional center for gemstone polishing, glass craftsmanship and arts. Turnov lies in the heart of the Bohemian Paradise (Český ráj) nature reserve which makes it a place for tourists and summer residents. The town is also an important traffic crossroads of three railways and the Prague–Liberec highway. Turnov was founded as a Bohemian town in 1272 by Jaroslav and Havel of Markvartice on a spur of rock overlooking the Jizera River. Turnov has a large museum (finalist in European museums competition), three galleries, six churches and a synagogue. The small old town of Middle Ages urbanism is surrounded by modern garden neighbourhoods and large parks representing an organic connection between urban areas and nature. The region is well known for many castles, châteaux and excellent rural architecture.





Mladá Boleslav

Mladá Boleslav is a city in the Central Bohemian Region of the Czech Republic, on the left bank of the Jizera river about 50 kilometres northeast of Prague. Founded in the second half of the 10th century by King Boleslav II. as a royal castle. Because there already was a castle known as Boleslav near Prague, this new castle was named Mladá (young) to distinguish it from the older Boleslav, which became known in the 15th century as Stará Boleslav (Old Boleslav). The town received partial city rights in 1334 and 1436, becoming an important site on the road from Prague to northern Bohemia, Lusatia, and Brandenburg. In the 17th and 18th centuries, Mladá Boleslav (called Bumsla by Jews) was an important Jewish center. In the 19th century (in fact, the period of decline of the Jewish community), Mladá Boleslav was dubbed "Jerusalem on Jizera". In 1634, Jacob Bassevi von Treuenberg (born 1580 in Verona, Italy), the first ennobled Jew in the Habsburg monarchy, was buried on the Jewish cemetery in Mladá Boleslav.

In the 19th century new prosperity came: the town became an important regional centre as new schools, theatres, museums, and the Laurin & Klement (today Škoda) automobile factory were founded. Since the 1990s the factory is making it one of the richest Czech towns.





Schedule

Wednesday, 3rd October

13:00 – 22:00	arrival	
14:00	event office	Praha – Pyramida
16:00 – 18:00	model middle distance	Turnov – Pelešany
17:30 – 18:00	model sprint	Praha – Pyramida
16:00	technical model	Praha – Pyramida
19:00	deadline for entries Knock-Out Sprint	Praha – Pyramida
	team officials' meeting	Praha – Pyramida

Thursday, 4th October

7:00 – 21:00	event office	Praha – Pyramida
9:00 – 13:00	event office	Praha – Olymp
9:30 – 10:45	Knock-Out Sprint – qualification race	Praha – Olymp
11:15 – 12:30	Knock-Out Sprint – quarterfinal	Praha – Olymp
15:00 – 17:30	event office	Praha – Výstaviště
15:30 – 16:40	Knock-Out Sprint – semifinal	Praha – Výstaviště
16:42 – 17:10	Knock-Out Sprint – final	Praha – Výstaviště
17:15	flower ceremony Knock-Out Sprint	Praha – Výstaviště
17:30	prize giving ceremony Knock-Out Sprint	Praha – Výstaviště
17:30	deadline for entries sprint relay	Praha – Výstaviště
19:00	team officials' meeting	Praha – Pyramida

Friday, 5th October

8:00 – 21:00	event office	Praha – Pyramida
9:00–12:00	VIP / Media race	Praha – Pyramida
14:00 (Wednesday) – 12:00 (Friday)	model middle distance	Turnov – Pelešany
15:00 – 17:00	event office	Praha – Petřín
15:30 – 16:30	sprint relay	Praha – Petřín
16:35	flower ceremony sprint relay	Praha – Petřín
17:00	prize giving ceremony sprint relay	Praha – Petřín
17:00	deadline for entries middle distance	Praha – Petřín
18:00	IOF Debriefing about the Knock-Out Sprint	Praha – Pyramida
19:00	team officials' meeting	Praha – Pyramida

Saturday, 6th October

8:00 – 21:00	event office	Praha – Pyramida
10:30 – 15:00	event office	Turnov – Valdštejn
11:30 – 15:30	middle distance	Turnov – Valdštejn
15:30	flower ceremony middle distance	Turnov – Valdštejn
16:00	prize giving ceremony middle distance	Turnov – Valdštejn
16:00	deadline for entries sprint	Turnov – Valdštejn
19:00	team officials' meeting	Praha – Pyramida
20:00	banquet	Praha – Pyramida

Sunday, 7th October

7:00 – 15:00	event office	Praha – Pyramida
9:00 – 13:00	event office	Mladá Boleslav
10:00 – 10:55	sprint Women	Mladá Boleslav
11:00	flower ceremony sprint W	Mladá Boleslav
11:00 – 11:55	sprint Men	Mladá Boleslav
12:00	flower ceremony sprint M	Mladá Boleslav
12:10	sprint Men & Women – Final B	Mladá Boleslav
13:00	prize giving ceremony sprint & World Cup departure	Mladá Boleslav

Event centre

Orea Hotel Pyramida (GPS: 50.0858461N, 14.3802353E)

Bělohorská 125/24
Praha – Břevnov
169 00
Czech Republic

Event office

Orea Hotel Pyramida (GPS: 50.0858461N, 14.3802353E)

Bělohorská 125/24
Praha – Břevnov
169 00
Czech Republic

Parking is possible directly in the building of Orea Hotel Pyramida for 400 CZK/day or 50 CZK/hour.

Head of event office: Jana Kubátová, office@wcup.cz, +420 739 598 691

Opening hours:

Wednesday, 3rd October	13:00 – 22:00	Praha – Pyramida
Thursday, 4th October	7:00 – 21:00 9:00 – 13:00 15:00 – 17:30	Praha – Pyramida Praha – Olymp Praha – Výstaviště
Friday, 5th October	8:00 – 21:00 15:00 – 17:00	Praha – Pyramida Praha – Petřín
Saturday, 6th October	8:00 – 21:00 10:30 – 15:00	Praha – Pyramida Turnov – Valdštejn
Sunday, 7th October	7:00 – 15:00 09:00 – 13:00	Praha – Pyramida Mladá Boleslav

Travel distances

To event centre (Hotel Pyramida):

by plane Václav Havel Airport Prague (PRG)	13 km	20 min by car 40 min by public transport - bus 191 (or bus 119 at Divoká Šárka change to 191) at Vypich (caution - there are two Vypich stations, get off at the second one - next to the tram stop) change to tram 22 until Malovanka
by train Prague main station	6 km	10 min by car 25 min by public transport - metro C (direction Letňany) at Vltavská change to tram 25 go to Malovanka

Visas

According to the current regulations citizens of some countries must obtain a visa in order to enter Czech Republic. Please note that conditions of entry to Czech Republic can change and all World Cup participants are advised to keep up to date of the current situation.

Please visit <http://www.mzv.cz/jnp/en/index.html>

Transportation

It is suggested that competitors and officials use their own cars. The organizer is not providing official transportation, but will support teams that rely on public transport in finding suitable ways to reach the training and event locations. To get to the city center is best to take trams 22 or 23, if you take 25 change to metro at Hradčanská.

Arena	Parking distance	Distance from event centre	Time by car
Praha – Olymp	0 – 500 m	8 km	15 min
from hotel Pyramida: tram 25 to Hradčanská, then bus 131 to Goetheho from airport: bus 119 to Divoká Šárka, tram 26 to Hradčanská and bus 131 to Goetheho from Main train station: tram 26 to Hradčanská, then bus 131 to Goetheho			
Praha – Výstaviště	0 – 500 m	6 km	10 min
from hotel Pyramida: tram 25 to Strossmayerovo náměstí, then tram 17 to Výstaviště Holešovice from airport: bus 119 to Divoká Šárka, then tram 26 to Strossmayerovo náměstí and tram 17 to Výstaviště Holešovice from Main train station: metro C to Nádraží Holešovice, then tram 17 to Výstaviště Holešovice			
Praha – Petřín	1 000 m	1.5 km (better on foot)	3 min
from hotel Pyramida: bus 149 to koleje Strahov			
Valdštejn	800 m	100 km	1h 10 min
Mladá Boleslav	200 – 500 m	65 km	50 min

Climate & risks

Average temperature: 8 – 14 °C
Probability of rain: moderate

There is no special clothing required. Shoes with metal dobs and spikes are not allowed in any race due to preservation of natural or cultural landscape. Using of such shoes is strictly forbidden and will be checked on the start. Runners with forbidden shoes will not be permitted to start.

No dangerous snakes, spiders or animals live in this region.
Beware of ticks. It can transmit borreliosis and encephalitis. It is recommended to see a doctor after removing a tick.

Model event

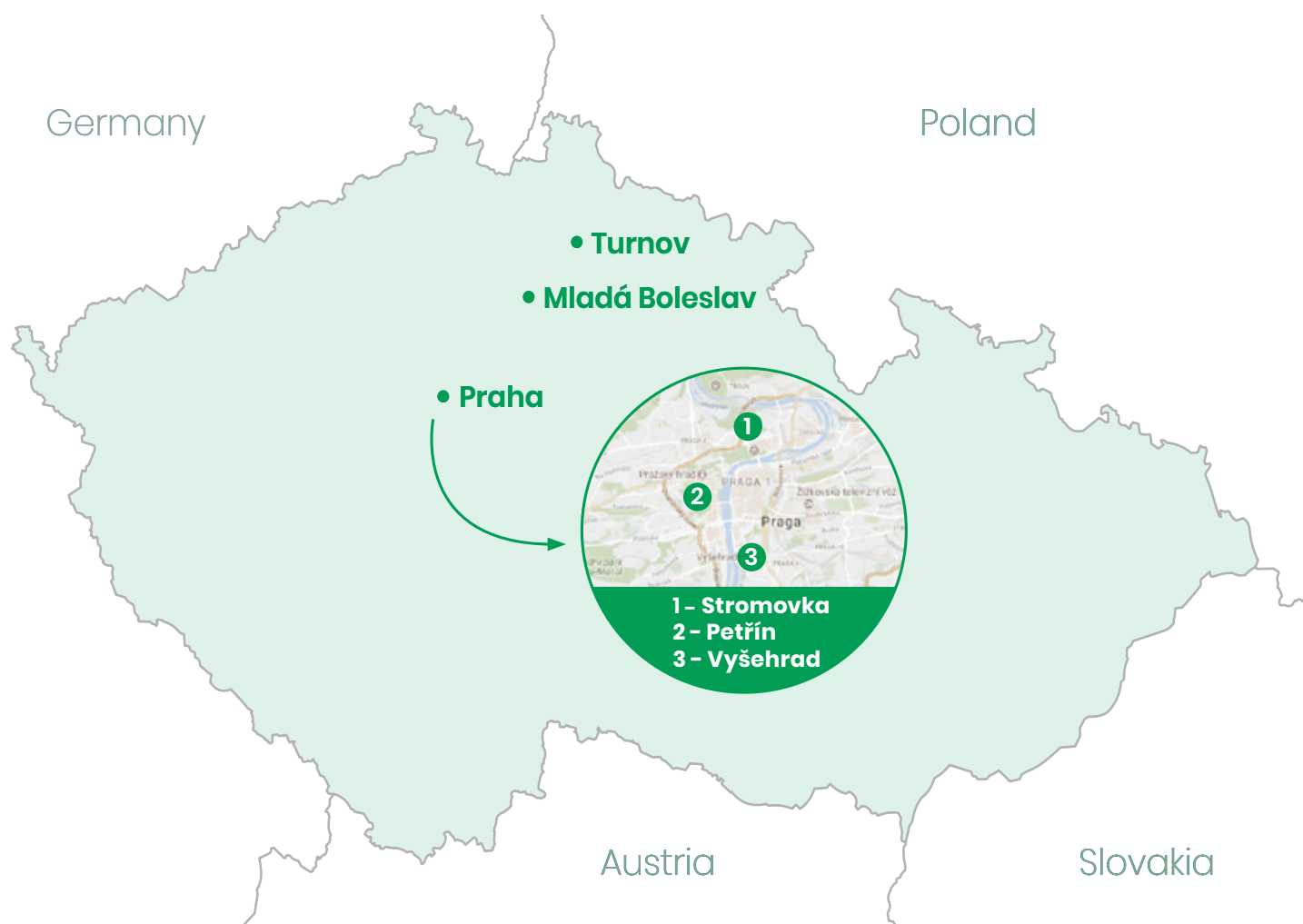
There will be two model events, one relevant for sprint disciplines and one for middle distance race. Models will be available as follows:

model sprint Wednesday, 3rd October 16:00 – 18:00

model middle distance Wednesday, 3rd October 14:00 – Friday, 5th October 12:00



Embargoed areas

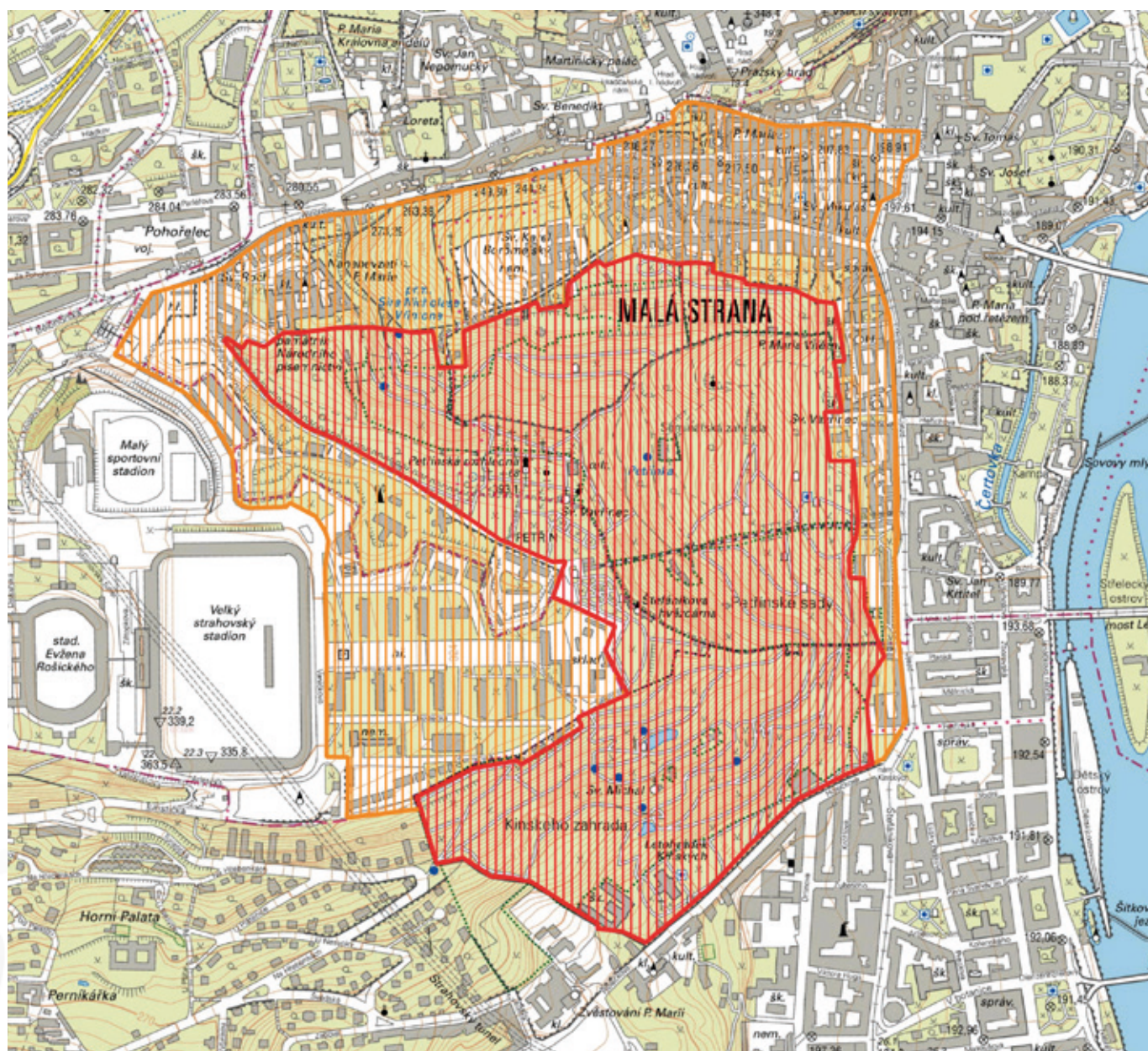


According to the IOF Competition Rules (rule 26.5), embargoed areas applies to all potential National Team members (runners, team leaders, coaches, doctors, physiotherapist, etc.) and all other who, through knowledge of the terrain, may influence the results of the competitions.

Embargoed areas have different level of strictness, from being open for visiting to fully embargoed. On the embargoed area maps, orange indicates areas which are permitted for access for competitors, team officials and other persons but may not be used for orienteering and running trainings or route-choice testing. These areas are going to change to strict embargo the day before the race at 16:00.

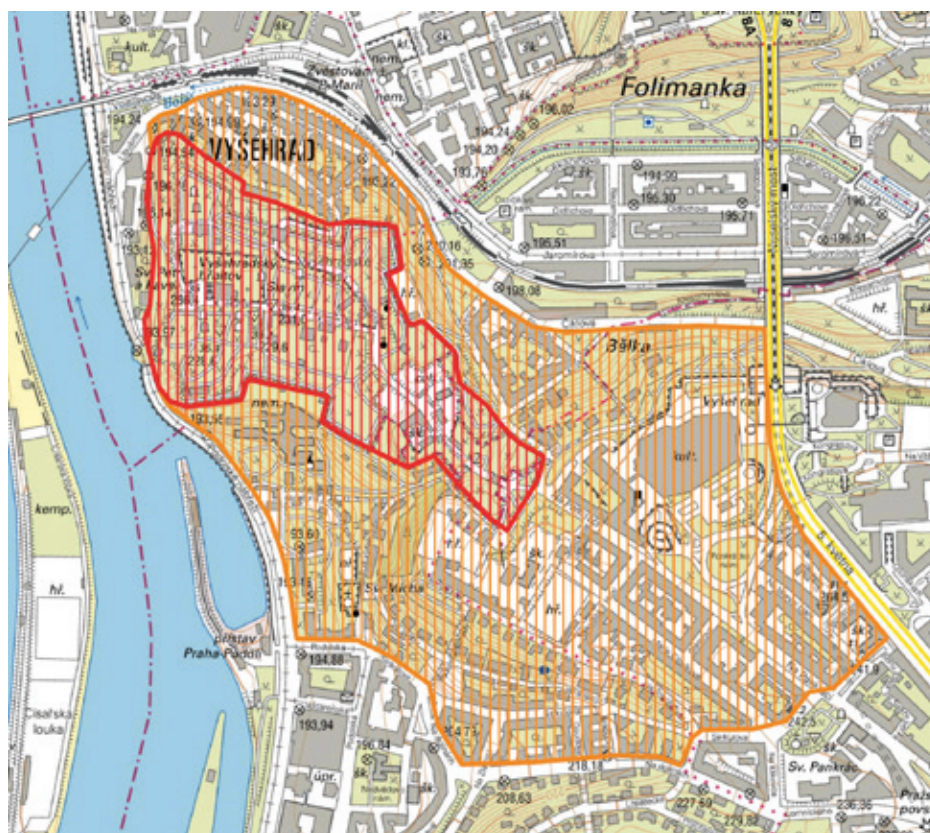
Red indicates areas with strict embargo, meaning that competitors, team officials, and other persons, who, through knowledge of the terrain, may influence the results of the competitions, are not allowed to enter the area.

Petřín (Praha)

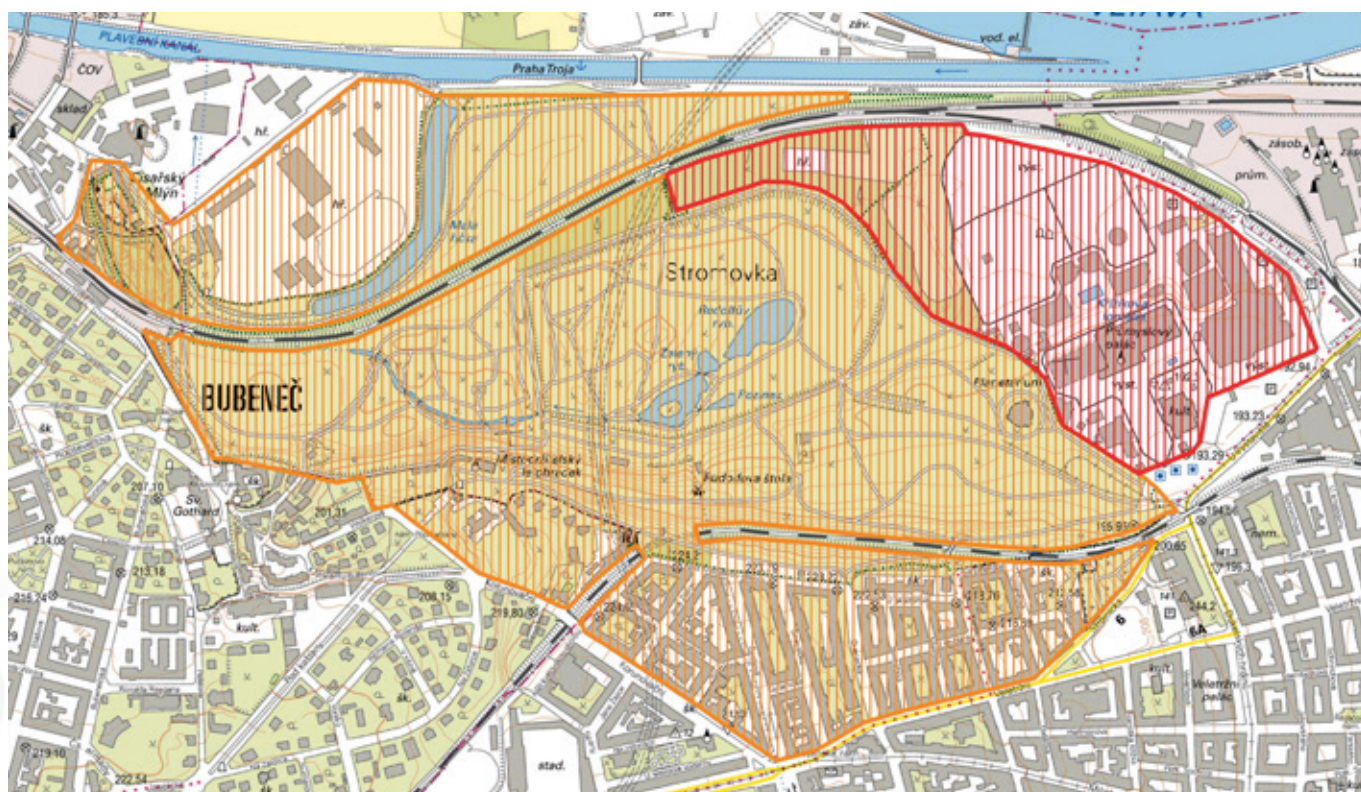




Vyšehrad (Praha)

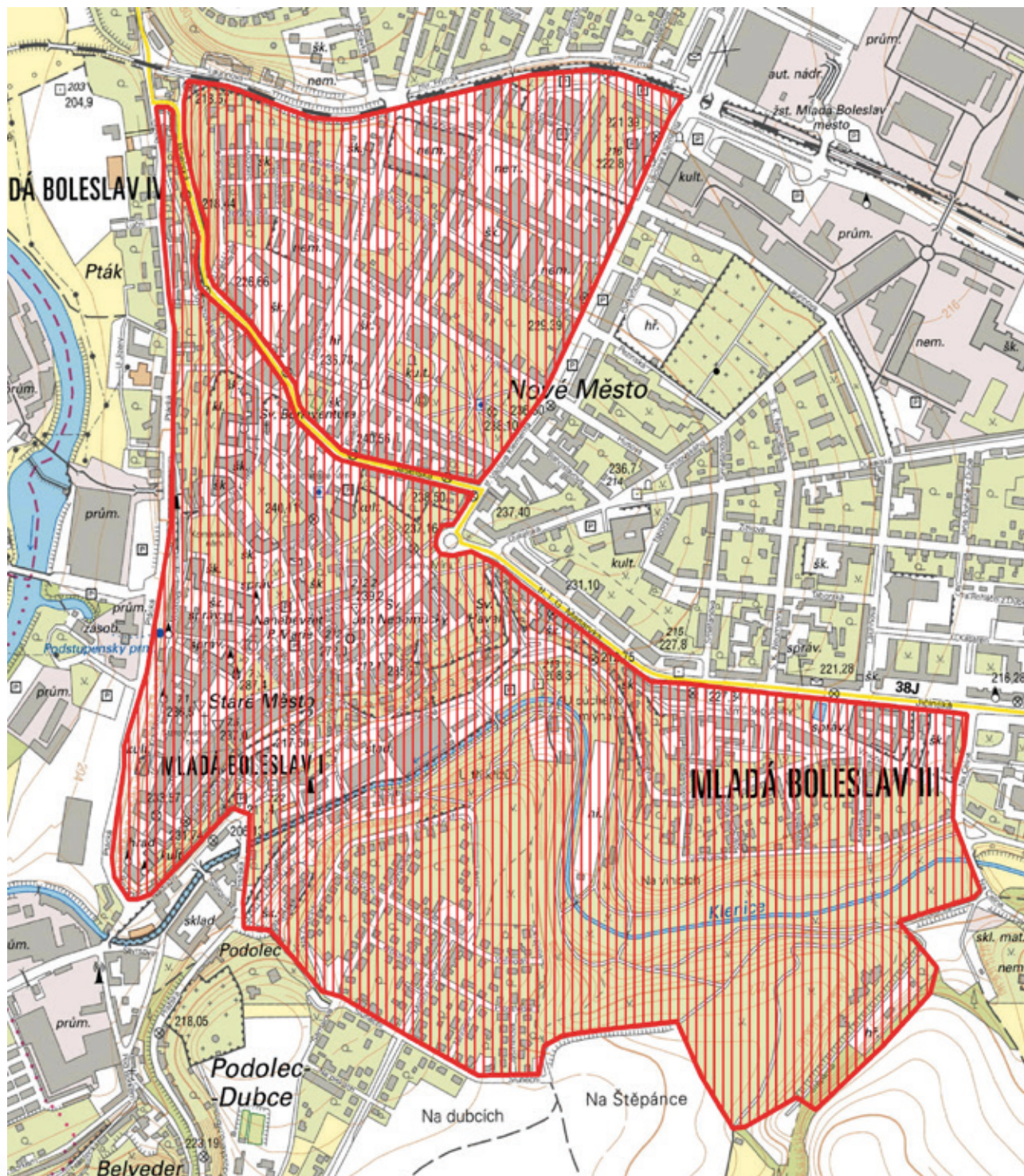


Stromovka (Praha)

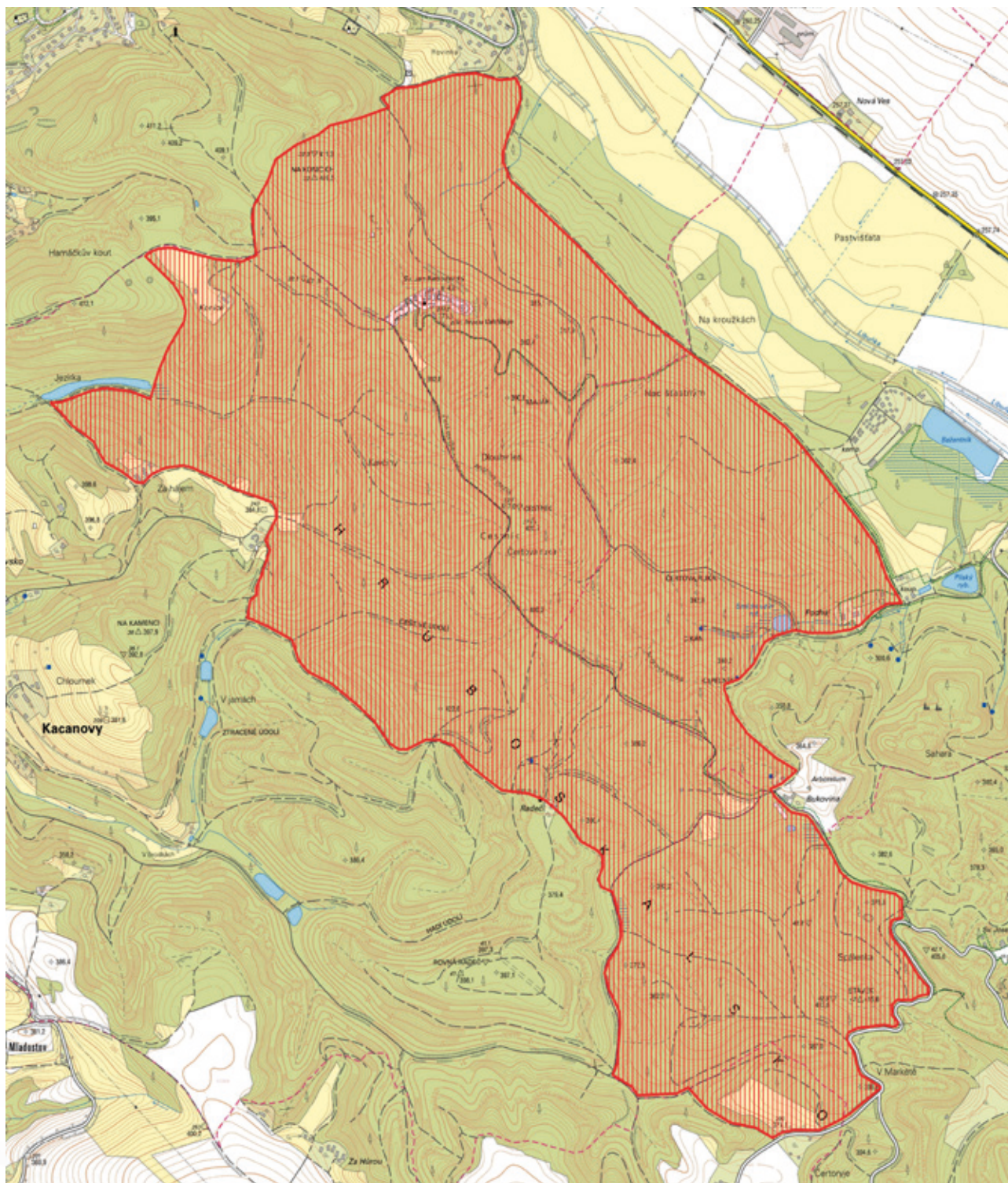




Mladá Boleslav



Turnov



Latest colour copies of maps of embargoed areas:

Petřín (Praha)

Petřín 4 1:5 555 2010
<http://mapy.orientacnisporty.cz/data/jpg/5712a.jpg>

Praga Caput Regni MMXV 1:5 000 2015
<http://mapy.orientacnisporty.cz/data/jpg/8993X.jpg>

Vyšehrad (Praha)

Vyšehrad 1:10 000 1999
<http://mapy.orientacnisporty.cz/data/jpg/2859a.jpg>

Stromovka (Praha)

Večerník Praha 1:5 000 2015
<http://mapy.orientacnisporty.cz/data/jpg/8307X.jpg>

Mladá Boleslav

Štěpánka 1:5 000 1998
<http://mapy.orientacnisporty.cz/data/jpg/2841a.jpg>

Turnov

Svatá Anna 1:10 000 2012
<http://mapy.orientacnisporty.cz/data/jpg/6338a.jpg>

Bukovec 1:10 000 2015
<http://mapy.orientacnisporty.cz/data/jpg/7982X.jpg>

Training possibilities

Training possibilities in Praha:

- <http://mapy.orientacnisporty.cz/mapa/karlin-vitkov-2015>
- <http://mapy.orientacnisporty.cz/mapa/invalidovna-copy-id-sprint-2015>
- <http://mapy.orientacnisporty.cz/mapa/parukarka-sprint-2017>

Training possibilities in Český ráj (Czech paradise) - near Turnov:

- <http://mapy.orientacnisporty.cz/mapa/skalacek-2017>
- <http://mapy.orientacnisporty.cz/mapa/trosky-2017>
- <http://mapy.orientacnisporty.cz/mapa/bora-2017>

Terrains are in protected landscape area Český ráj (Czech paradise), where are very strict conditions of organizing any sport event or training (even for small groups). It is forbidden organizing trainings in this area without agreement from organizers of World Cup or from orienteering club OOB TJ Turnov (<http://www.tur.cz/>). Shoes with metal dobbs or spikes are forbidden.

Contact and more information regarding trainings: trainings@wcup.cz

Entries

Entries for World Cup athletes and team officials entries via IOF Eventor.

The entry form will be available from 4th July 2018 on <https://eventor.orienteering.org/Events/Show/5750>. The event start date is 3rd October 2018.

Entries are done by the national team manager.

It's allowed to compete in sprint relay in teams mixed of athletes from different countries. The wish to compete send please to info@wcup.cz (if you haven't already done so), the competition fee has to be paid in race office.

Team size entry

The following information shall be filled via IOF Eventor:

- Team manager (chosen from list in IOF Eventor)
- Number of team athletes (men and women)
- Number of team officials
- Number of teams for the relays

The deadline for team size entry is 3rd August 2018 (- 2 months).

Team names entry

The following information shall be filled via IOF Eventor:

- Name of each team athlete by selecting from federation members in IOF Eventor

The deadline for athlete's names entry is 23rd September 2018 (- 10 days).

Competition entries

Names of the competitors and, if required, their starting group, shall be entered in IOF Eventor, on the day before an individual competition (see Schedule).

Names of the competitors and their running order shall be entered in IOF Eventor, on the day before a relay competition (see Schedule).

Late entries, changes of team size or athlete's names

Late entries and changes will be accepted, if possible, up to event start date, 3rd October 2018. No late entries or changes will be accepted after that date. Late entries and changes will always have a defined extra cost (surcharge). Late entries and changes will always be treated equally and must be communicated directly to the organiser. The organiser makes the changes in IOF Eventor after deadlines (info@wcup.cz).

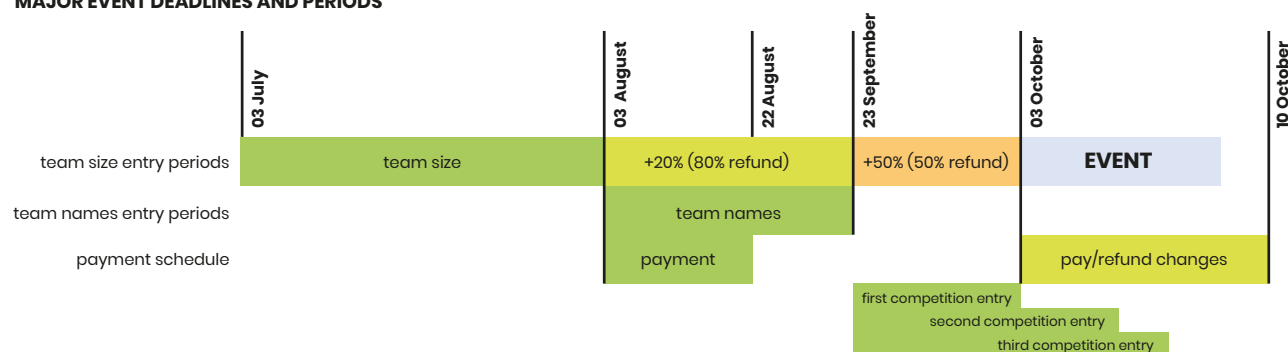
4th August to 23rd September: surcharge 20% on new entries and withdrawals receive an 80% refund.

24th September to 3rd October: surcharge of 50% on new entries, withdrawals receive a 50% refund. Name changes in this period cost 250 CZK.

Payments

After the team size deadline (-2 months), the organiser will invoice the federation for entries and services. The invoices should be paid before 22nd August 2018 (- 6 weeks). If the Federation have done changes after that date it will be paid/refunded on the event at the event office.

MAJOR EVENT DEADLINES AND PERIODS



Entry fee:

Knockout sprint (per competitor)	2 000 CZK
Sprint relay (per team)	4 800 CZK
Middle distance (per competitor)	1 300 CZK
Sprint (per competitor)	1 300 CZK
Accreditation for officials	1 000 CZK
Banquet	600 CZK

Accreditation for athletes is included in entry fees. There is no limit for maximum officials per team.

Bank: Fio banka, a.s., V Celnici 1028/10, 117 21 Praha 1, Česká republika

Account number: 706189423 / 2010

IBAN: CZ84201000000000706189423

BIC: FIOBCZPPXXX

Account owner: Český orientační spolek z.s.

Detail of payment: number of invoice

(there will be created separate invoice for every payment and it will be sent on email)

Notice: Bank charges will be fully paid by payment sender!

For the payment identification, please write 3-letter code of your country ([online here](#)) to the note in the payment order.

There are no regulations for registration media representatives and extra representatives of the federations.

Accommodation

Price covers accommodation / 1 person / 1 night

A - single room (incl. breakfast)	2750 CZK	(+500 CZK dinner)
A - double room (incl. breakfast)	1450 CZK	(+500 CZK dinner)
C - single room	500 CZK	(+ 300 CZK half board)
C - double room	450 CZK	(+ 300 CZK half board)

For booking contact e-mail accommodation@wcup.cz

Media

Journalists, photographers, cameramans and also social media content creators are welcomed. Registration is to be made via Eventor.

The media service includes:

- Free internet connection
- Electricity
- Working area in tent
- Access to photo control/zones

Contact person: Petr Kadeřávek, + 420 605 766 591, media@wcup.cz

GPS

GPS tracking system will be used in all races and applies to all runners. Athletes can borrow vests for the whole period from the organiser or they may use their own.

Anti-doping Code

Doping tests are always carried out in accordance with the procedures described in the WADA International Standard for Testing. The IOF Anti-Doping Code and rules and the World Anti-Doping Code 2015 apply as of 1st January 2015.

For more information, please consult: <https://orienteering.org/anti-doping/>

VIP / Media race

VIP/Media race is taking place on Friday the 5th October between 9am and 12am close to the event center. The course will be long approx. 2 km (city, park) with small refreshment prepared in the finish. There won't be any starting list, everybody can choose his own starting time, while the starting box has to be punched in the moment of start. Registration is to be done until 30th September 2018 via following [form](#).

Contact person: Lucie Roškotová, +420 723 844 804, lucie.roskotova@wcup.cz

Adviser & Controller

IOF Senior Event Adviser – Péter Molnár (HUN), peter@veszcart.hu
National controller – Adam Chromý, chra@adamna.net

Jury

Carl Goran Struts, SWE, 4th – 7th October
Flemming Jørgensen, DEN, 4th and 5th October
Aron Less, HUN, 6th and 7th October
Jan Fiala, CZE, 4th October
Zuzana Klimplová, CZE, 5th, 6th and 7th October

Contact

www: <http://wcup.cz/>

Address:

Český orientační spolek z.s.
Chudenická 1059/30
Praha 10 – Hostivař
102 00
Czech Republic

Phone:

+420 725 850 045
(e-mail preferred)

Email:

info@wcup.cz

Organizers

Český svaz orientačních sportů and Český orientační spolek

Organizing committee:

event director
technical director
sport director
organizing director
secretary, chief cartographer
accommodation
head of event office
media

David Aleš
Jan Pícek
Daniel Wolf
Matěj Suchý
Jan Fátor
Jarmila Němečková
Jana Kubátová
Petr Kadeřávek

david.ales@wcup.cz
jan.picek@wcup.cz
daniel.wolf@wcup.cz
matej.suchy@wcup.cz
info@wcup.cz
accommodation@wcup.cz
office@wcup.cz
media@wcup.cz

Our team is looking forward to seeing you in Prague!

Classes and participation restrictions

Classes in all races are Men and Women. There are no age restrictions.

Each participating federation shall appoint a team manager to act as a contact person between the team and the organizer. It is the team manager's duty to see that the team receives all necessary information. Competitors participate at their own risk. Insurance against accidents shall be the responsibility of their federation or themselves, according to national regulations. There are no other peculiarities of the event.

SI Air+ punching will be used during all competitions. SI cards will be provided by organizers.

National quotas for competitions

The national quotas for competitions 9 (Knock-Out Sprint), 10 (Middle distance) and 11 (Sprint) are based on the total points of the leading 10 athletes from each Federation in the IOF World Federation League tables (combined Sprint/Middle/Long) as published on 1st January 2018. Separate quotas will apply for men and women.

The allocations for competitions 9, 10 and 11 will be:

- The top 6 nations get 8 places.
- All other nations get 6 places.

A Federation may enter any runner irrespective of his/her position in the IOF World Rankings lists. All 2018 individual World Champions, provided they are selected by their Federations, shall be offered a wild card place in competitions 9, 10 and 11. These wild card places shall be additional to the national quotas.

All Federations in sprint relay can start with a maximum of 4 teams. Each team consists of 4 team members of whom at least two must be women. Only the best placed team of each Federation will count for the World Cup result list. Teams with runners from more than one Federation (but still with 4 team members of whom at least two must be women) may participate but will not be placed in the results.

Awards, Results, World Cup and World Ranking

Detailed rules of the World Cup results and awards management can be found here:

[Special Rules for the 2018 World Cup in Orienteering](#)

[Team World Cup 2018 Special Rules](#)

Official standings in World Cup can be found on the [IOF World Cup page](#)

The official result lists are published in [IOF Eventor](#)

Competition	Awards	Results
Knock-Out Sprint	IOF Diploma to 1-6 Prizes from organiser to 1-3	Qualification races in IOF Eventor as results. Quarter finals, Semi-finals, Final official results in IOF Eventor uploaded as results (list with only Order and Athlete) There shall be total result list as (ordered list with all athletes from all finals) as results. IOF Diploma to 1-6 (only best placed teams)
Sprint relay	IOF Diploma to 1-6 (only best placed teams)	Official World Cup results list in IOF Eventor as results. (Only best placed teams) Full result list is uploaded as PDF to IOF Eventor.
Middle	IOF Diploma to 1-6 Prizes from organiser to 1-3	Official results in IOF Eventor as results.
Sprint (A and B races)	IOF Diploma to 1-6 in A Race Prizes from organiser to 1-3 in A Race	Official results in IOF Eventor as results.
World Cup 2018 – Overall	1st place: medal, trophy cup, diploma, 1000 EURO 2nd place: medal, diploma, 500 EURO 3rd place: medal, diploma, 400 EURO 4th place: diploma, 300 EURO 5th place: diploma, 200 EURO 6th place: diploma, 100 EURO	Official standings on IOF World Cup page.
Team World Cup 2018 – Overall	For the overall victory a trophy will be awarded to the winning country. Each organiser can award prizes of varying character.	Official standings on IOF World Cup page (as PDF)

Competition	World Cup points	World Ranking points
Knock-Out Sprint	Points are allocated according to “Special Rules for the 2018 World Cup in Orienteering”. Official standings on IOF World Cup page.	Eligible for World Ranking Points. calculated according to “Special Rules for the 2018 World Cup in Orienteering”
Sprint relay	Points are allocated according to “Team World Cup 2018 Special Rules”. Official standings on IOF World Cup page (PDF file)	
Middle	Points are allocated according to “Special Rules for the 2018 World Cup in Orienteering”. Official standings on IOF World Cup page.	Eligible for World Ranking Points
Sprint (A and B races)	Points are allocated according to “Special Rules for the 2018 World Cup in Orienteering”. Official standings on IOF World Cup page.	Eligible for World Ranking Points. Calculated according to “Special Rules for the 2018 World Cup in Orienteering”. The A and B races will be considered as separate races for World Ranking purposes, with the B race being categorised as a standard WRE (not a World Cup event) for ranking purposes.

Events

Knock-Out Sprint (Competition 9 World cup 2018)

Date:	Thursday, 4th October
Locations:	Praha – Olymp (GPS: 50.1085928N, 14.4106647E) – morning Praha – Výstaviště (GPS: 50.1074128N, 14.4292847E) – afternoon
Terrain:	park, sport facilities and area of exhibition grounds, very good runnability and visibility, partly steep hillsides, altitude 180 – 240 m
Map:	scale 1 : 4 000, contour interval 2 m, ISSOM 2007, mapped by Jan Fátor
Course planner:	Jan Flašar
Number of rounds:	4 (Qualification race, Quarterfinal – 6 heats, 36 competitors, Semifinal – 3 heats, 18 competitors, Final – 1 heat, 6 competitors)

Qualification race: 3 parallel heats with an interval start, start interval 1 minute. The starts in each qualification race shall be in the order of the Sprint World Ranking as of 1 October, with the leading runners starting first. The first 12 placed runners in each heat will qualify for the quarter-finals. The allocation of runners to heats shall be in accordance with rule 12.8, except that there is no requirement for runners from the same Federation in the same heat to be separated in the start list.

Quarter-finals: 6 quarter-finals with 6 runners each. Mass start with forking. The 3 leading runners in each quarter-final qualify for the semi-finals.

Semi-finals: 3 semi-finals with 6 runners each. Mass start with forking. The 2 leading runners in each semi-final qualify for the final.

Final: 6 runners, mass start with forking.

Qualification rounds have an expected winning time of 8-10 minutes. Other rounds have an expected winning time of 6-8 minutes. All rounds have a maximum running time of 15 minutes.

Course lengths:	Qualification race:	Women	2.3 km, climb 15 m, 15 controls
		Men	2.8 km, climb 45 m, 19 controls
	Quarter-finals:	Women	2.1 km, climb 15 m, 8 controls
		Men	2.5 km, climb 20 m, 9 controls
	Semi-finals:	Women	1.6 km, climb 15 m, 9 controls
		Men	1.8 km, climb 15 m, 11 controls
	Final:	Women	1.6 km, climb 15 m, 12 controls
		Men	1.9 km, climb 20 m, 14 controls

Number of refreshment controls: 0

Allocation of runners to quarter- and semi-finals:

Qualified runners for the quarter- finals may choose which quarter -final they are in, subject to the availability of places in the quarter -final concerned.

Order of selection	Ranking in the qualification race
1	2nd in heat 1
2	2nd in heat 2
3	2nd in heat 3
4	1st in heat 1
5	1st in heat 2
6	1st in heat 3
7	3rd in heat 1
8	3rd in heat 2
9	3rd in heat 3
10	4th in heat 1
11	4th in heat 2
12	4th in heat 3

Order of selection	Ranking in the qualification race
13	5th in heat 1
14	5th in heat 2
15	5th in heat 3
16	6th in heat 1
17	6th in heat 2
18	6th in heat 3
19	7th in heat 1
20	7th in heat 2
21	7th in heat 3
22	8th in heat 1
23	8th in heat 2
24	8th in heat 3

Order of selection	Ranking in the qualification race
25	9th in heat 1
26	9th in heat 2
27	9th in heat 3
28	10th in heat 1
29	10th in heat 2
30	10th in heat 3
31	11th in heat 1
32	11th in heat 2
33	11th in heat 3
34	12th in heat 1
35	12th in heat 2
36	12th in heat 3

If any runner is not present for the choosing of places, they shall be allocated places randomly after all other places are filled.

Semi-final places are determined as follows (where A is the first quarter-final to be run and F is the last, A1 denoting first place in quarter-final A)

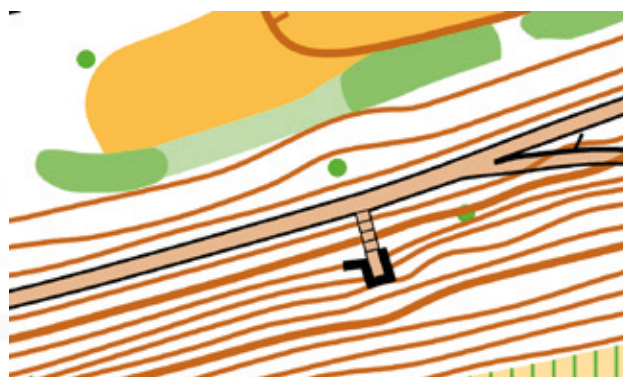
Semi-final	Runners
1	A1, B1, C2, D2, E3, F3
2	C1, D1, E2, F2, A3, B3
3	E1, F1, A2, B2, C3, D3

Forking:

Forking is used in the quarter-finals, semi-finals and final.

All possible forking methods: course choice, butterfly, no forking

More information: <https://orienteering.org/foot-orienteering/3rd-sprint-format/>



Sprint relay

Date: Friday, 5th October

Location: Praha – Petřín (GPS: 50°4'58.019"N, 14°23'39.589"E)

Terrain: forest park with some steep hillsides and small cliffs, good runnability and visibility, altitude 200 – 330 m

Map: scale 1 : 4 000, contour interval 2 m, ISSOM 2007, mapped by Jan Fátor

Course planner: Jan Mrázek

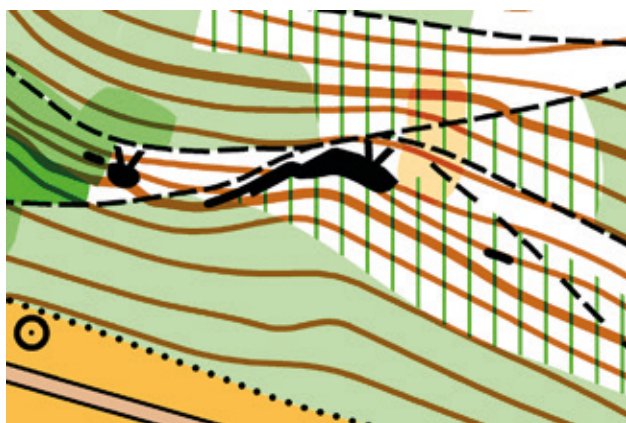
Number of legs: 4

Course lengths: Women (Leg 1&4) 3.5 km, climb 100 m, 22 controls / each leg
Men (Leg 2&3) 3.8 km, climb 120 m, 22 controls / each leg

Number of refreshment controls: 0

Winning time: 60 min

National quotas: All Federations can start with a maximum of 4 teams. Each team consists of 4 team members of whom at least two must be women. Only the best placed team of each Federation will count for the World Cup result list. Teams with runners from more than one Federation (but still with 4 team members of whom at least two must be women) may participate but will not be placed in the results.



Middle distance (Competition 10 World cup 2018)

Date: Saturday, 6th October

Location: Turnov – castle Valdštejn (GPS: 50.5620858N, 15.1657175E)

Terrain: sandstone rocks, moderate density of paths, deep and steep valleys, mostly good runnability and visibility, altitude 300 – 420 m

Map: scale 1 : 10 000, contour interval 5 m, ISOM 2017, mapped by Zdeněk Sokolář

Course planner: Jindřich Kořínek

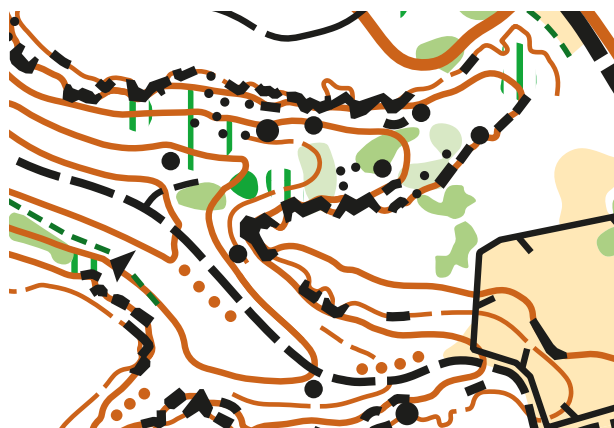
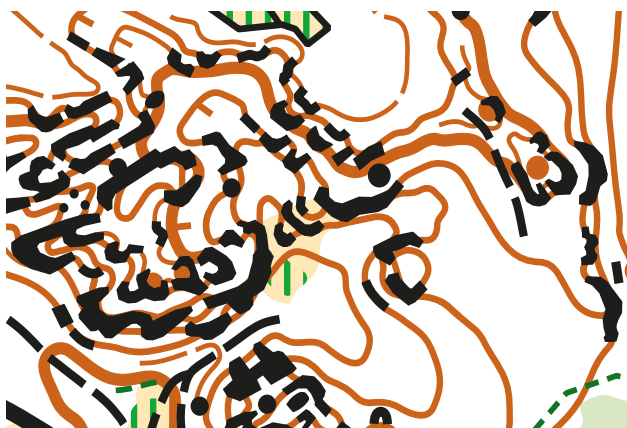
Start interval: 90 second start interval. The start order is determined strictly by the order of the World Ranking as of 3 October (highest ranked last).

Course lengths:

Women	3.7 km, climb 305 m, 17 controls
Men	4.3 km, climb 360 m, 22 controls

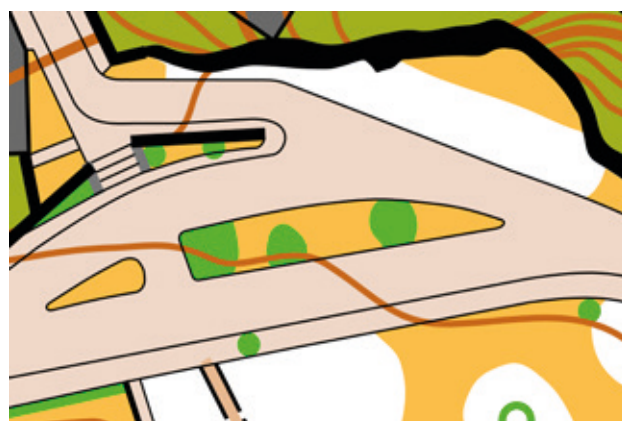
Number of refreshment controls: 1

Winning time: 35 min



Sprint (Competition 11 World cup 2018)

Date:	Sunday, 7th October		
Location:	Mladá Boleslav (GPS: 50°24'39.941"N, 14°54'10.473"E)		
Terrain:	city and park, very good runnability and visibility, altitude 200 – 240 m		
Map:	scale 1 : 4 000, contour interval 2 m, ISSOM 2007, mapped by Jan Fátor		
Course planner:	Daniel Wolf		
System:	There will be an A race and a B race. The A race will contain the 40 entrants (and ties) who are highest-ranked in the World Cup standings after competition 10. All other competitors will be in a B race. Both the A race and B race will have a 1 minute start interval, with competitors starting in order of the World Cup standings after competition 10 (highest ranked last). Competitors with no World Cup points will start in random order before all those competitors with points. The A and B races will be considered as separate races for World Ranking purposes, with the B race being categorised as a standard WRE (not a World Cup event) for ranking purposes.		
Course lengths:	Women	3.5 km, climb 90 m, 20 controls	
	Men	4.0 km, climb 95 m, 20 controls	
Number of refreshment controls:	0		
Winning time:	14:50 min		



Events for spectators

Friday	5th October	sprint distance, open training courses
Saturday	6th October	middle distance, regional event
Sunday	7th October	sprint, regional event

Petřín
Turnov – Valdštejn
Mladá Boleslav



**ORIENTEERING
WORLD CUP**
FINAL ROUND 2018
CZECH REPUBLIC



organizers



**ČESKÝ
ORIENTAČNÍ
SPOLEK**



INTERNATIONAL ORIENTEERING FEDERATION

main partners



SUN  INVENT

institutional partners

Středočeský kraj



Statutární město
Mladá Boleslav

PRA	HA
PRA	GUE
PRA	GA
PRA	G